

# SR 75 Industrial Park – Flora

80 acres of prime land located on SR 75 in Flora, just south of SR 18.



Acres Available:	80
Price Per Acre:	\$12,000
Ownership:	Optioned through the <i>Carroll County Economic Development Corporation</i>
Highways:	SR 75—traffic count: 2,650; SR 18—traffic count: 3,320
Electricity:	Flora Municipal Power (IMPA supplied)
Gas:	NIPSCO
Water:	Town of Flora (across SR 75)
Sewage:	Town of Flora (across SR 75)
Fire Protection:	Flora Volunteer Fire Department
Schools:	Carroll Consolidated School Corporation

## Carroll County, Indiana



Our north-central region has a six-county population of 360,000 to meet your manpower needs.

## CARROLL COUNTY ECONOMIC DEVELOPMENT CORPORATION

Contact: PO BOX 83, 119 W. Franklin St., Delphi, IN 46923  
 765-564-2060 or 765-564-2207 (fax)  
 e-mail: [director@carrollcountyedc.com](mailto:director@carrollcountyedc.com)

## SR 75 Industrial Park – Flora



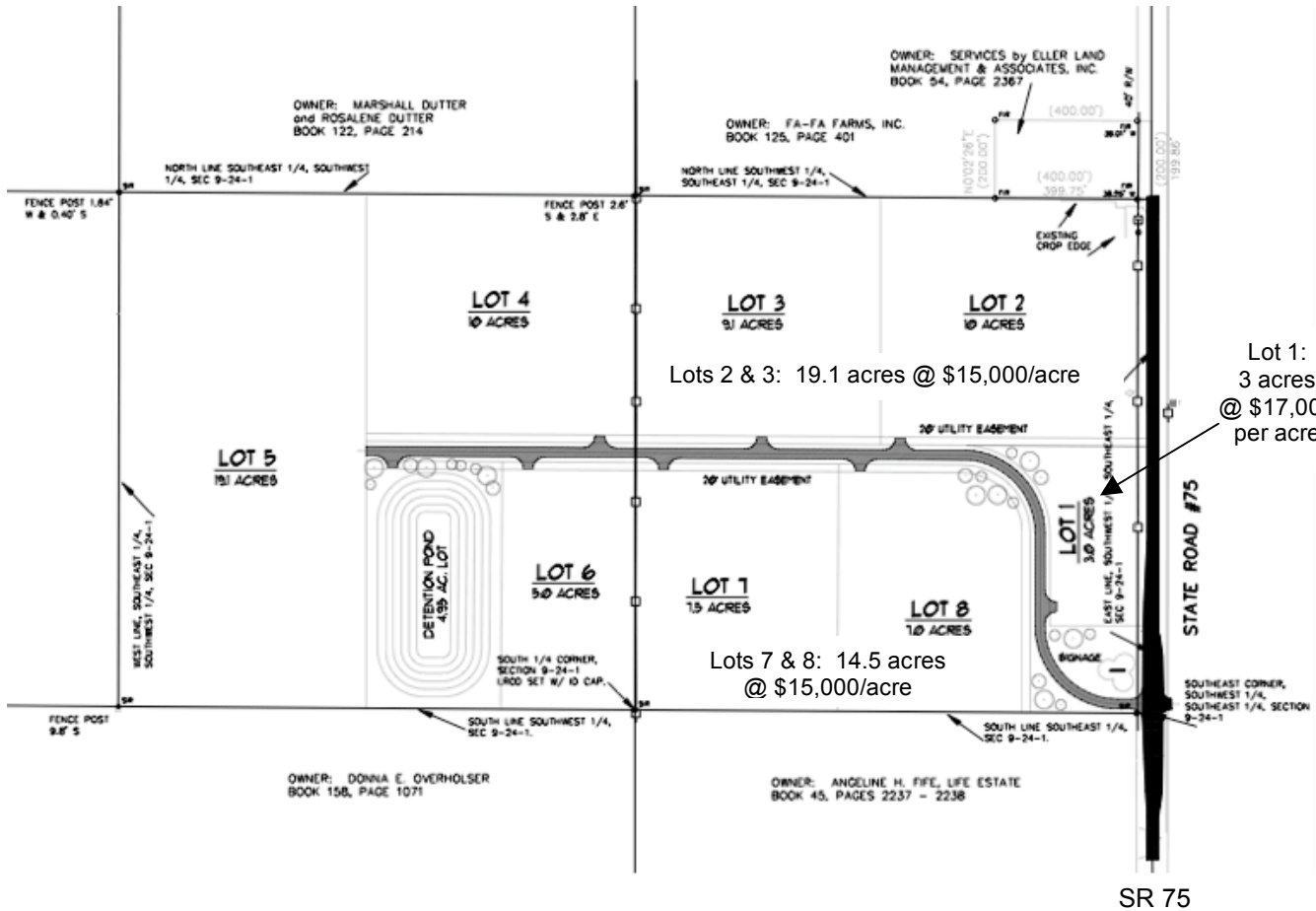
- **Location**—It is situated on SR 75, just south of the SR 18 intersection, providing good connections both north/south and east/west.
- **Skilled Workers**—A labor force to meet your manpower needs.
- **Training Opportunities**—Close to both Ivy Tech and Purdue University.
- **Work Ethic**—A community with rural character and values and a strong work ethic to help your business prosper.
- **Backing**—Supportive community leadership for your company's success.

### CARROLL COUNTY ECONOMIC DEVELOPMENT CORPORATION

Contact: PO BOX 83, 119 W. Franklin St., Delphi, IN 46923  
765-564-2060 or 765-564-2207 (fax)  
e-mail: [director@carrollcountyedc.com](mailto:director@carrollcountyedc.com)

# SR 75 Industrial Park – Flora

## Phase I



80 acres, priced by lot or \$12,000 / acre for total site.

## CARROLL COUNTY ECONOMIC DEVELOPMENT CORPORATION

Contact: PO BOX 83, 119 W. Franklin St., Delphi, IN 46923  
 765-564-2060 or 765-564-2207 (fax)  
 e-mail: [director@carrollcountyedc.com](mailto:director@carrollcountyedc.com)